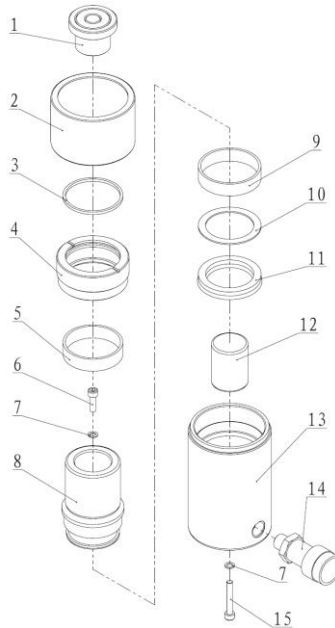




EAGLE PRO Cylinders should be repaired only by a qualified operator or Authorized EAGLE PRO Service Centers. Use Only EAGLE PRO or other approved hydraulic oil. Release pressure in hydraulic system and disconnect hose(s) before making repair.

Parts List



Item No.	Part Number	Description	Quantity	Item No.	Part Number	Description	Quantity
1	SG-252G	Saddle	1	12	31044	Return Spring Assembly ES-251 Only	1
2	ES251-4	Thread Cover	1		31045	Return Spring Assembly ES-252 Only	1
3★	21689	Wiper Ring	1		31046	Return Spring Assembly ES-254 Only	1
4	ES251-2	Guide Ring	1		31047	Return Spring Assembly ES-256 Only	1
5	21460	Anti-wear Ring B	1		31048	Return Spring Assembly ES-258 Only	1
6	11004	Bolt	1		31049	Return Spring Assembly ES-2510 Only	1
7★	QY2-13	Copper Washer	2		31050	Return Spring Assembly ES-2512 Only	1
					31051	Return Spring Assembly ES-2514 Only	1
8	ES251-3Y	Piston ES-251 Only	1	13	ES251-1Y	Cylinder Body ES-251 Only	1
	ES252-3Y	Piston ES-252 Only	1		ES252-1Y	Cylinder Body ES-252 Only	1
	ES254-3Y	Piston ES-254 Only	1		ES254-1Y	Cylinder Body ES-254 Only	1
	ES256-3Y	Piston ES-256 Only	1		ES256-1Y	Cylinder Body ES-256 Only	1
	ES258-3Y	Piston ES-258 Only	1		ES258-1Y	Cylinder Body ES-258 Only	1
	ES2510-3Y	Piston ES-2510 Only	1		ES2510-1Y	Cylinder Body ES-2510 Only	1
	ES2512-3Y	Piston ES-2512 Only	1		ES2512-1Y	Cylinder Body ES-2512 Only	1
	ES2514-3Y	Piston ES-2514 Only	1		ES2514-1Y	Cylinder Body ES-2514 Only	1
9	21464	Anti-wear Ring A	1	14	EAB-201A	Coupler	1
10★	21321	Gasket	1	15	11008	Bolt	1
11★	24318	Y-ring	1				

★ Items included in Repair Kit, Repair Kit order number: **ES251-RP-B**