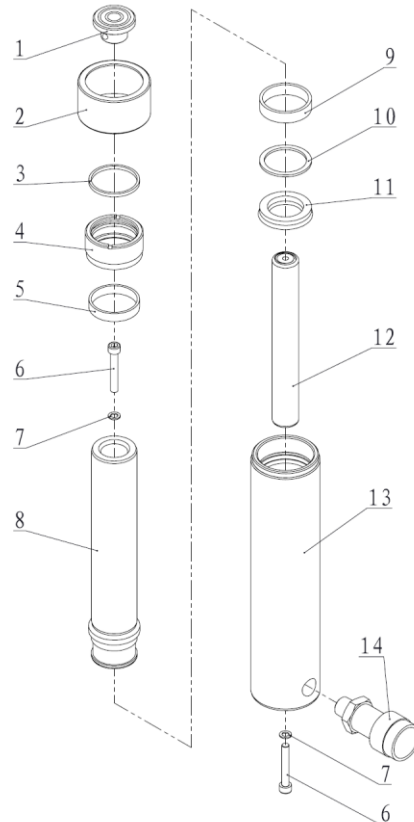




EAGLE PRO Cylinders should be repaired only by a qualified operator or Authorized EAGLE PRO Service Centers. Use Only EAGLE PRO or other approved hydraulic oil. Release pressure in hydraulic system and disconnect hose(s) before making repair.

Parts List



Item No.	Part Number	Description	Qty.	Item No.	Part Number	Description	Qty.
1	SG-102G	Saddle	1	10★	21419	Gasket	1
2	ES101-2	Thread Cover	1	11★	24301	Y-ring	1
3★	21683	Wiper Ring	1	12	31022	Return Spring Assembly ES-106 Only	1
4	ES106-1	Stop Ring	1		31025	Return Spring Assembly ES-108 Only	1
5	21661	Anti-wear Ring	1		31026	Return Spring Assembly ES-1010 Only	1
6	11008	Bolt	2		31027	Return Spring Assembly ES-1012 Only	1
7★	QY2-13	Copper Washer	2		31028	Return Spring Assembly ES-1014 Only	1
8	ES106-4Y	Piston ES-106 Only	1	13	ES106-3	Cylinder Body ES-106 Only	1
	ES108-4Y	Piston ES-108 Only	1		ES108-3	Cylinder Body ES-108 Only	1
	ES1010-4Y	Piston ES-1010 Only	1		ES1010-3	Cylinder Body ES-1010 Only	1
	ES1012-4Y	Piston ES-1012 Only	1		ES1012-3	Cylinder Body ES-1012 Only	1
	ES1014-4Y	Piston ES-1014 Only	1		ES1014-3	Cylinder Body ES-1014 Only	1
9	21670	Anti-wear Ring	1	14	EAB-201A	Coupler	1

★ Items included in Repair Kit. Repair Kit order number: **ES101-RP-B**